



# The Ductless is *in* Trend

Avoid up to **30%** energy loss due to ductwork



Flexible installation without ductwork, ideal for whole home, addition or conversion



Precisely cool & heat the needed spaces/ spots

## Where Will You Need An IN?

In some spaces, built-in products might be a better fit in terms of aesthetics.



**Built-*in* Design**  
**Fit-*in* Size**  
**Blend-*in* Style**

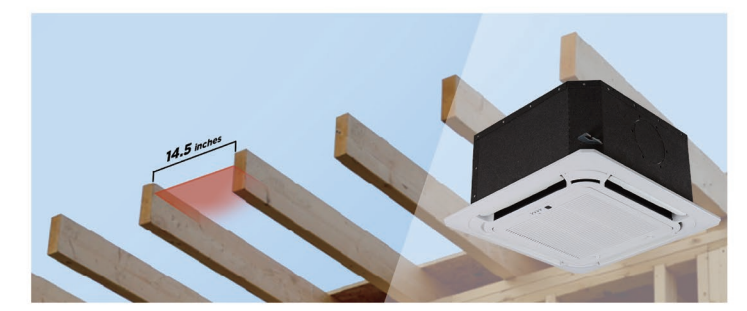
Meet the new solution of ductless split



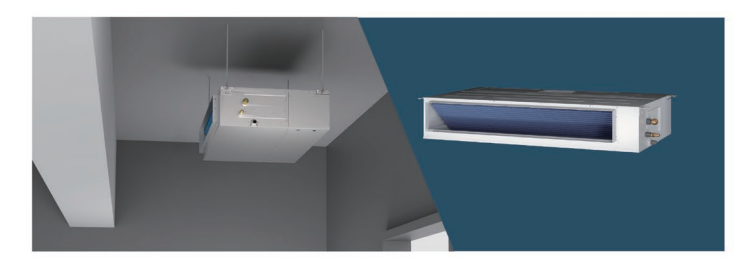
1. Not enough space for a highwall unit installation



2. The dimensions of current ceiling cassette don't fit in the common joist space



3. Too many obstructions on the ceiling

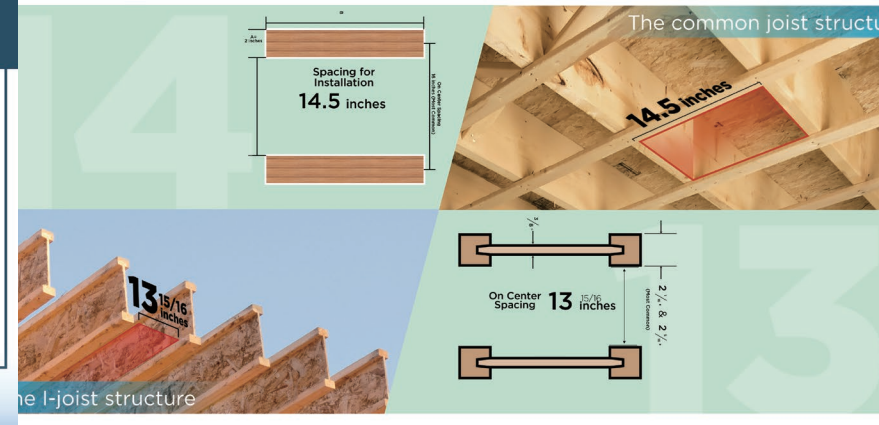


A solution is Midea IN Cassette



## Industry exclusive compact size

Midea IN Cassette is ready-to-fit into the home joist spaces, making it an ideal option for new home, additional spaces, and conversion at a later date.



## Fit-*in* Space Blend-*in* Design

Probably one of the most versatile indoor units ever

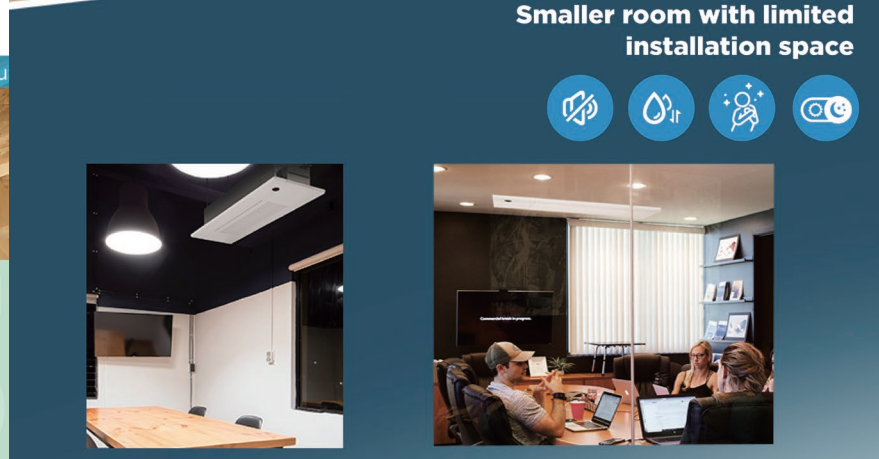
Larger area such as living room



When no one at home in cold days

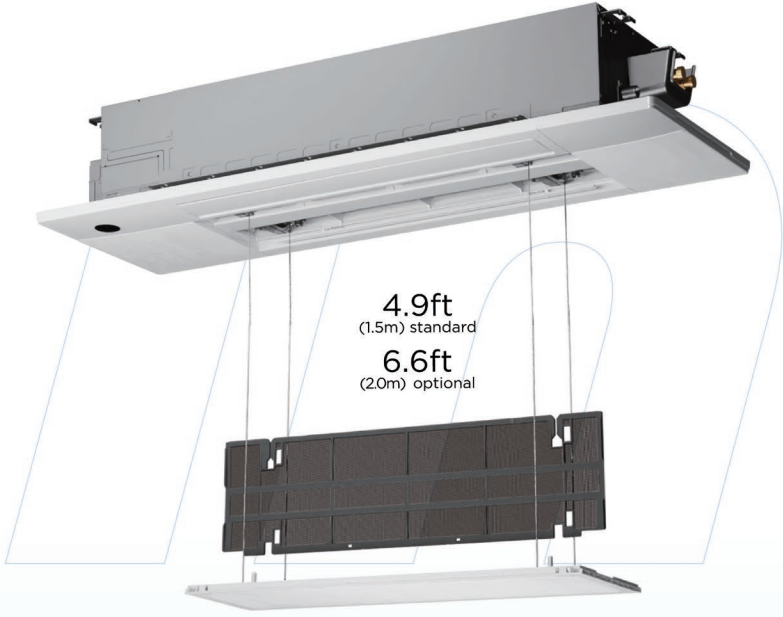


Smaller room with limited installation space



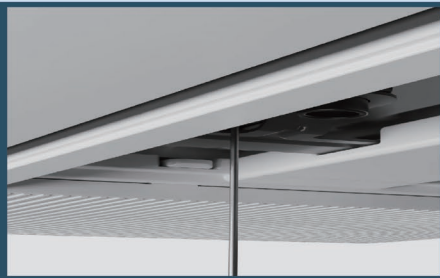
Ductless fans can't handle accumulating debris, to maintain the unit, homeowners will have to wash the unit filter monthly (more often if you smoke or have pets).

## And now, even daily-based maintenance gets easy with Elevation Panel



No more climbing up and down, as the Elevation Panel itself can lower and raise. By activating the Elevation Panel function on the remote, or smart controller, the panel will go straight down to you for easy filter access.

The adjustable rope lengths can be set at 5' or 6.5' for different access levels.



## Take into account the contractors Industry exclusive 2-way installation



### 1. HangUp Installation



Our hangers with optimized anti-cutting design are easy to grab and lift up, preventing hands from scratching by the sharp edge.



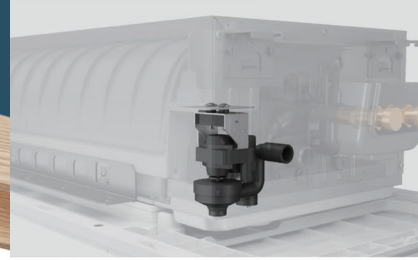
### 2. PushIn Installation

The unique & exclusive screws-in design for easy installation options. Installers can plug in the IN-cassette unit between the joist and fix it on the beams with screws.



Double Row Tack Holes Design adapt to various joist size

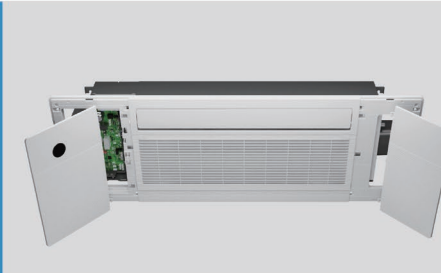
## Built-in water pump



The built-in water pump can discharge the condensate water. No need to add an extra water pump to the side of the unit.

## Easy-to-access Core Components

Adopting the design of the high wall split, installers only have to open the front panel to gain access to PCB box sections.



## Integrated Package Design



Save the logistics spaces and easy to bring to the installation site

One-Way Cassette Extreme Heat_Specification Up to 24 SEER2								
Model	Indoor Unit		MCBU-06HRFNI-MVOW	MCBU-09HRFNI-MWOW	MCBU-12HRFNI-MVOW	MCBU-18HRFNI-MU2W		
	Outdoor Unit		MOX230-09HFNI-MW5W	MOX330-09HFNI-MY5W	MOX330-12HFNI-MW5W	MOX430-17HFNI-MTOW		
<b>Performance</b>								
Power Supply		V,Ph,HZ	208/230V,1Ph, 60Hz	208/230V,1Ph, 60Hz	208/230V,1Ph, 60Hz	208/230V,1Ph, 60Hz		
SEER2 (AHRI 210/240 - 2023)	Cooling/Heating Capacity		Btu/h	6500/7100	9000/10900	12000/12500	16700/20000	
	SEER2		Btu/w	22	24	23	19.8	
	EER2		Btu/w	14.5	13	13	12.5	
	HSPF4		Btu/w	10.8	12.4	10	11.2	
Heating at 5°F (-15°C)		Rated capacity		Btu/h	8000	10500	11000	16700
		COP		W/W	2.0	1.8	1.8	1.93
<b>Indoor unit</b>								
Air Flow Volume	Turbo/Hi/Mi/Lo	CFM	341/294/258/235	341/294/258/235	352/311/282/247	400/351/300/207		
Noise Level	H/M/L	dB(A)	37.5/35.5/32.5	37.5/35.5/31	38.5/37/32.5	44/40.5/35		
Net Dimension	WxDxH		mm	1278x335x228	1278x335x228	1278x335x228	1278x335x228	
	WxDxH		inch	50.31x13.19x8.98	50.31x13.19x8.98	50.31x13.19x8.98	50.31x13.19x8.98	
Packing Dimension	WxDxH		mm	1330x335x570	1330x335x570	1330x335x570	1330x335x570	
	WxDxH		inch	52.37x13.19x22.44	52.37x13.19x22.44	52.37x13.19x22.44	52.37x13.19x22.44	
Net/Gross Weight			kg	19.9/36.9	20.5/37.6	20.5/37.6	20.5/37.6	
			lbs	43.87/81.35	45.19/82.89	45.19/82.89	45.19/82.89	
<b>Panel(Up-Down Option)</b>								
Net Dimension	WxDxH		mm	1360x475x99	1360x475x99	1360x475x99	1360x475x99	
	WxDxH		inch	53.54x18.71x3.9	53.54x18.71x3.9	53.54x18.71x3.9	53.54x18.71x3.9	
Packing Dimension	WxDxH		mm	1435x541x165	1435x541x165	1435x541x165	1435x541x165	
	WxDxH		inch	56.5x21.3x6.6	56.5x21.3x6.6	56.5x21.3x6.6	56.5x21.3x6.6	
Net/Gross Weight			kg	6.5/10.3	6.5/10.3	6.5/10.3	6.5/10.3	
			lbs	14.33/22.71	14.33/22.71	14.33/22.71	14.33/22.71	
<b>Stuffing Quantity</b>								
Stuffing Quantity		20'/40'/40'HQ	Indoor unit	64/128/128	64/128/128	64/128/128	64/128/128	
Stuffing Quantity		20'/40'/40'HQ	Panel	224/448/512	224/448/512	224/448/512	224/448/512	

One-Way Cassette Energy Star_Specification Up to 22.5 SEER2							
Model	Indoor Unit		MCBU-09HRFNI-MWOW	MCBU-12HRFNI-MVOW	MCBU-18HRFNI-MU2W	MCBU-18HRFNI-MUOW	
	Outdoor Unit		MOX230-09HFNI-MW5W	MOX230-12HFNI-MV5W	MOX430-18HFNI-MUOW		
<b>Performance</b>							
Power Supply		V,Ph,HZ	208/230V,1Ph, 60Hz	208/230V,1Ph, 60Hz	208/230V,1Ph, 60Hz	208/230V,1Ph, 60Hz	
SEER2 (AHRI 210/240 - 2023)	Cooling/Heating Capacity		Btu/h	9000/11000	12000/12500	18000/19000	
	SEER2		Btu/w	22.5	22	21.8	
	EER2		Btu/w	13	12.6	12.5	
	HSPF4		Btu/w	11.5	9.8	10.7	
Heating at 5°F (-15°C)		Rated capacity		Btu/h	7700	7800	13100
		COP		W/W	2.34	2.21	2.3
<b>Indoor unit</b>							
Air Flow Volume	Turbo/Hi/Mi/Lo	CFM	341/294/258/235	352/311/282/247	400/351/300/207		
Noise Level	H/M/L	dB(A)	38/36/33	40.5/38.5/34.5	44/41/34		
Net Dimension	WxDxH		mm	1278x335x228	1278x335x228	1278x335x228	
	WxDxH		inch	50.31x13.19x8.98	50.31x13.19x8.98	50.31x13.19x8.98	
Packing Dimension	WxDxH		mm	1330x335x570	1330x335x570	1330x335x570	
	WxDxH		inch	52.37x13.19x22.44	52.37x13.19x22.44	52.37x13.19x22.44	
Net/Gross Weight			kg	19.9/36.9	20.5/37.6	20.5/37.6	
			lbs	43.87/81.35	45.19/82.89	45.19/82.89	
<b>Panel(Up-Down Option)</b>							
Net Dimension	WxDxH		mm	1360x475x99	1360x475x99	1360x475x99	
	WxDxH		inch	53.54x18.71x3.9	53.54x18.71x3.9	53.54x18.71x3.9	
Packing Dimension	WxDxH		mm	1435x541x165	1435x541x165	1435x541x165	
	WxDxH		inch	56.5x21.3x6.6	56.5x21.3x6.6	56.5x21.3x6.6	
Net/Gross Weight			kg	6.5/10.3	6.5/10.3	6.5/10.3	
			lbs	14.33/22.71	14.33/22.71	14.33/22.71	
<b>Stuffing Quantity</b>							
Stuffing Quantity		20'/40'/40'HQ	Indoor unit	64/128/128	64/128/128	64/128/128	
Stuffing Quantity		20'/40'/40'HQ	Panel	224/448/512	224/448/512	224/448/512	